

KCC Alert



Kentucky Conservation Committee

March 14, 2009

KCC's To-Do List:

- Urge your representative to oppose HB 537 (see articles).
- Review the Governor's Energy Strategy, which will drive legislation in the next session. Log on to www.energy.ky.gov and scroll to the bottom for a link to the pdf (2.45 mb).
- Renew your membership in KCC! We depend on the financial support of our members for our lobbying efforts.

—eye on the session—

No clockstoppers for conservation and energy

By Bruce Williams,
KCC Legislative Agent

The final hours of the 2009 Regular session were hectic, but without the clockstopping dramatics of the 2008 session.

Still, some last minute shenanigans were attempted. SB 138 (setting up oil and gas leases on State lands) and SB 13 (the nuclear power bill) were attached to several House bills in the Senate, but the time is such that it is doubtful that they will pass.

The House stuck to an earlier promise and finished regular business at 5:00 Friday, and the Senate ended at around 8:00. The Legislature can still take one of the two remaining "Veto" days to conclude regular business, but it is not likely that any controversial bills will be included.

There will now be a nine-day recess after which the legislature will re-convene to address gubernatorial vetoes.

All in all, it was a quiet session with most of the big issues worked out by leadership in the early stages. Most of the major environmental bills are being put back for a later session, including changes to the earlier energy legislation and changes to mine safety laws.

The big issue, state revenues, will remain an issue the rest of the year, and may prompt a special session if income continues to deteriorate.

As I write this at 8:30 pm on Friday night, it looks like we've gotten through this session with no major environmental disasters. A special thanks to Tom Fitzgerald for his work on good amendments to several bills.

Fossils and nukes and a toothless portfolio: OH! NO!

Evolving markets for alternatives to petroleum and coal motivated a whirlwind of energy legislation that would provide tax incentives for new fossil fuels, lift the moratorium on new nuclear facilities, and exploit natural resources on state lands. But after the dust settled, not much passed.

HB 537, introduced by House Floor Leader Rocky Adkins on the deadline for new legislation in the house, attempted to implement several aspects of the Governor's energy plan including a voluntary alternative energy portfolio for electric utilities. The bill moved rapidly through the House then was festooned by the Senate with energy bills originating there, including SB 13 that would lift storage requirements for nuclear facilities; it's still alive, and back in the House. SB 13 had passed the Senate but had stalled, itself, in the House.

Not that HB 537 didn't already have a slippery side. MACED warned at its hearing that voluntary energy portfolios won't work (a view shared by KCC). A successful House amendment added tar sands, which have horrid environmental consequences from their extraction and refinement, to resources with alternative

energy tax incentives.

With the scary stuff tied up in knots, a couple of good bills are headed to the Governor for signature (or veto):

SB 27, sponsored by Sen. Bob Leeper, establishes a brownfield development fund (regrettably without a revenue source).

SB 84, sponsored by Sen. David Givens, will require state agencies to document their purchase of Kentucky-grown agricultural products.

HB 344, sponsored by Rep. Tom McKee and others, establishes a surplus commodities program for distributing Kentucky agricultural products to food banks.

There's a stinker, too. HB 452 creates permitting rules for oil-drilling in coal seams but reduces the existing buffer from 500 to 300 feet, increasing hazards. It was sponsored by Rep. Jim Gooch, chairman of the House Natural Resources and Energy Committee.

*A statement of KCC's position
on HB 537 is on page 4.*

Visit us on the web: www.kyconservation.org

2009 Kentucky General Assembly

House Leadership

Speaker: Greg Stumbo

Speaker Pro Tem: Larry Clark

	Majority (D)	Minority (R)
Floor Leader	Rocky Adkins	Jeff Hoover
Caucus Chair	Robert Damron	Bob DeWeese
Whip	John Will Stacy	David Floyd

Key House Committees

House Agriculture and Small Business

Tom McKee, chair; Royce W. Adams, John A. Arnold, Dwight W. Butler, Mike Denham, Richard Henderson, Ken Upchurch, vice chairs; Johnny Bell, Mike Cherry, James R. Comer, C. B. Embry, Jeff Greer, Jimmy Higdon, Charlie Hoffman, Martha Jane King, Brad Montell, Fred Nesler, David Osborne, Don Pasley, Tom Riner, Steven Rudy, Dottie Sims, Kent Stevens, Wilson Stone, Tommy Turner, Susan Westrom.

House Natural Resources and Environment

Jim Gooch, chair; Tim Couch, Keith Hall, Fitz Steele, and Jim Stewart, vice chairs; Hubert Collins, Stan Lee, Reginald Meeks, Tim Moore, Don Pasley, Marie Rader, Kevin Sinette, Robin Webb.

House Tourism Development and Energy

Eddie Ballard, chair; Mike Harmon, Ancel Smith, Fitz Steele, Ron Weston, vice chairs; Royce Adams, Larry Clark, Leslie Combs, Bob DeWeese, Myron Dossett, Kelly Flood, Jim Gooch, Keith Hall, Thomas Kerr, Martha Jane King, Tom McKee, Tim Moore, David Osborne, Robin L. Webb.

Senate Leadership

Speaker: David Williams

Speaker Pro Tem: Katie Stine

	Majority (R)	Minority (D)
Floor Leader	Dan Kelly	Ed Worley
Caucus Chair	Dan Seum	Johnny Ray Turner
Whip	Carroll Gibson	Jerry Rhoads

Key Senate Committees

Senate Natural Resources and Energy

Tom Jensen, chair; Brandon Smith, vice chair; David Boswell, Ray S. Jones, Bob Leeper, Dorsey Ridley, John Schickel, Katie Stine, Robert Stivers, Gary Tapp, Johnny Ray Turner.

Senate Economic Development, Tourism, and Labor

Alice Forgy Kerr, chair; Gary Tapp, vice chair; Julian M. Carroll, Julie Denton, Denise Harper Angell, Ray S. Jones, Jerry P. Rhoads, Katie Stine, Jack Westwood, Ken Winters.

Senate Agriculture

David Givens, chair; Vernie McGaha, vice-chair; David Boswell, Ernie Harris, Dan Kelly, Bob Leeper, Joey Pendleton, Dorsey Ridley, Kathy W. Stein, Damon Thayer, Ken Winters.

Calendar

Mar 16-25: Veto

Mar 27: Adjourn sine die

The committee thanks Plangraphics, Inc., for the use of their facilities in Frankfort in the production of the Alert.

Contacting Legislators

Who are my legislators? Representative s and Senators are listed by county at www.lrc.ky.gov/Legislators.htm. Or, input your address at <http://vote-smart.org>. Or, call your county clerk.

How do I communicate with legislators? Legislators want to hear from their constituents. You have several options—use the telephone numbers in the box below.

Leave a message: The legislator message line will get you an operator who will take the message you dictate, no questions asked. Include the Bill Number in your message. You may call 7 am to 11 pm ET M-Th, 7 am to 6 pm F.

Send a fax: A fax can be addressed to individual members, members of a committee, or members of the House or Senate.

Send email: Email addresses are available here:

<http://www.lrc.ky.gov/whoswho/email.htm>

Some legislators respond to email; some do not.

Send postal mail to the Capitol Annex, Frankfort, KY 40601.

Call direct: Legislators are very busy during the session, but many will try to take time to talk to a constituent.

What do I say? Your message can be as simple as “Please oppose House Bill 888.” You don’t have to be an expert.

Sharing relevant personal experiences can be *very* effective.

Important Phone Numbers

Legislator Message Line: 1-800-372-7181

Legislator Fax Line: 502-564-6543

To talk directly to a legislator: 1-502-564-8100

Bill Status Line: 1-866-301-9004

Committee Calendar Line: 1-800-633-9650

Governor's Office: 502-564-2611

EPPC Secretary: 502-564-3350

Learn More about Bills

The Legislative Research Commission’s website posts bills and amendments and is updated nightly:

<http://www.lrc.ky.gov/legislation.htm>

It works best with MS Explorer.

If you want to track a particular bill or subject area through email updates, subscribe to the “Bill Watch” service here:

<http://kentucky.gov/services/billwatch/>

2009 KCC Board of Directors

Vicki Holmberg, Lexington, President

Russ Barnett, Lawrenceburg

Ray Barry, Lexington

Ramesh Bhatt, Lexington

W. Horace Brown, Bagdad

Wm Bryant, Lawrenceburg

Susan Bush, Lexington

Greg Kuhns, Louisville

Wm Martin, Lexington

Andy McDonald, Frankfort

Bruce W. Scott, Frankfort

David Wicks, Louisville

Jack Wilson, Lexington

Pam Wood, Harrodsburg

KCC Lobbyist: **Bruce Williams**

502-863-5938; cell: 859-221-1132

The **Kentucky Conservation Committee** is not associated with the “Kentucky Conservation Coalition.”

Bill Summaries and KCC Positions

NOTE: At our meetings during the session, the board of KCC tracks bills before the General Assembly that fall within our mission and considers what KCC's position on them should be. Bills that are central to our mission are identified as "**Priority**" for work by our lobbyist and to encourage communications with legislators by our members. The newsletter is sent out immediately after our meetings and should be inclusive of legislative activity up to the Friday evening prior to your receiving this newsletter. **Information that has been added to or changed from our last newsletter is in bold.**

Senate Bills

Bill No	KCC Position	Priority	Sponsor	Summary	Status/Committee
SB 7	Monitor		Tapp, Seum	cf HB 21, 81, 135. Allows low-speed electric vehicles to use highways with a posted speed limit of 45 mph or less; requires title, registration, insurance.	S-Trans
SB 12	Study		Pendleton	Requires fuel terminals to sell ethanol blends; permits biodiesel and ethanol blended gasoline to be freely blended for retail.	S-NR & E
SB 13	Oppose		Leeper	Changes "means for permanent disposal" to "plan for storage" for nuclear waste in criteria for PSC approval of nuclear power facilities. Cf HB 537.	Passed S H-NR & E
SB 27	Support		Leeper	Establish a brownfield development fund.	Passed S & H To Governor
SB 49	Oppose		Thayer	Prohibits charging stormwater rates against unsewered customers.	S-S & LG
SB 51	Strongly support		Harris	Authorizes PSC to require demand-side plans from utilities and to review and approve them.	S-NR & E
SB 52	Support		Jones	Requires emergency action plans to include information to expedite medical air evacuation from mine sites.	Passed S H-NR & E
SB 55	Oppose		Jones	Makes new coal generating plants and modifications to existing plants eligible for the HB 1 incentives.	S-A & R
SB 63	Support		Harper Angel	Creates an e-scrap recycling program requiring registration of manufacturers and their recycling plans, prohibits sale of non-registered equipment after 2011, separates e-scrap from regular waste after 2014, provides for fines, and establishes a trust fund from fees. CS	Recomm S-NR & E
SB 64	Monitor		Jensen	Amends law to conform repair of mine ventilation fans with MSHA standards.	Passed S H-NR & E
SB 66	Oppose		Boswell	Adds crude oil from tar sands to the definition of alternative fuels eligible for incentives under HB 1; sets minimum investment at level for coal. Cf HB 537.	S-NR & E
SB 84	Support		Givens	Requires reports from state agencies on purchases of KY-grown agricultural products.	Passed S & H to Governor
SB 89	Oppose		Denton	Requires a nonprofit with budget less than \$10m to retain an attorney and CPA to sign state government contracts, explain them to the non-profit's board, and attend all meetings of the board; requires minutes of each board meeting sent to contracting agency.	S-S & L Govt
SB 99	Support		Stein	Requires state agencies and institutions to annually report amounts of recycled waste except aluminum.	S-NR & E
SB 100	Strongly Support		Stein	"Stream saver" bill. Cf HB 104.	S-NR & E
SB 131	Support		Pendleton, Stein	Authorizes agricultural production of "industrial hemp" regulated by Dept of Agriculture; authorizes random testing by county sheriffs.	S-Ag
SB 134	Support		Ridley	Requires regulation of gas well tank batteries; authorizes forfeited bond fees for reclamation of batteries and lines at abandoned wells. Committee substitute funds reclamation from petroleum tank assurance fund.	S-Rules
SB 138	Strongly Oppose		Jensen, Stivers	Authorizes the Finance Cabinet to lease mineral rights on lands owned by the state or by public universities; proceeds of sales to agency of deed record, not General Fund. Cf SJR 67. Committee substitute moves authorization to Secty of EPPC and funds reclamation from petroleum tank assurance fund.	Passed S H-Rules
SB 156	Support		Thayer	Doubles maximum output of "small farm wineries."	S-LO & AR

Senate and House Resolutions

Bill No	KCC Position	Priority	Sponsor	Summary	Status/Committee
SJR 37	Strongly Support		Jones	Requires EPPC regulations for emergency action plans for high-hazard-potential dams. Cf HJR 119	S-NR & E
HJR 7	Oppose		Edmunds	Directs UK to study potential impact of mining in Robinson Forest on forests and streams. NOTE: Robinson Forest has been designated "lands unsuitable for mining."	H-NR & E
SJR 67	Monitor		Jensen	Directs Dept of Energy to contract with KY Geo Survey to study potential oil and gas reserves on lands owned by state agencies and public universities. Cf SB 138.	Passed S & H to Governor
HJR 116	Oppose		Hall	Gives infrastructure funding priority to coal-to-liquid projects.	Passed H S-NR & E
HJR 119	Oppose as amended		Webb	Requires EPPC regulations for emergency action plans for high-hazard-potential dams. Cf SJR 37.	Passed H S-NR & E
HJR 126	Monitor		Adkins	Express support for KGS study of carbon sequestration research.	Passed H S-Rules
HJR 152	Oppose		Comer	Requires study of economic incentives for large-scale dairy ops.	H-Ag & SB

KCC's position on HB 537 implementing the Governor's energy plan

Editor's Note: the following statement was prepared prior to its amendment to ease restrictions on nuclear facilities and before the end of regular business in the 2009 session on March 13.

Kentucky should not give subsidies to economically risky and environmentally destructive fuels derived from coal, oil shale, and tar sands. They should NOT be included in an Alternative Transportation Fuels Standard. In addition, any biofuels should meet standards for environmental sustainability and social benefits.

The Kentucky Conservation Committee strongly objects to the inclusion of subsidies for the production of transportation fuels and gas from coal, waste coal, oil shale, and tar sands. The use of these for fuels would add to Kentucky's burden of carbon emissions. The proposition that Kentucky should commit to producing four billion gallons per day of coal-derived-liquids, on the eve of carbon regulation, is financially reckless.

Providing tax breaks for the production of fuels that will increase the state's carbon emissions, at a time when the exact opposite is needed, represents a failure to face the challenges of climate change and the transformations needed in our energy system.

HB 537 offers additional inappropriate tax incentives to grain-based ethanol, by allowing unused cellulosic ethanol credits to raise the existing cap on grain-based ethanol credits. Grain-based ethanol has a great many environmental and societal shortcomings and is not the answer for our state's transportation needs.

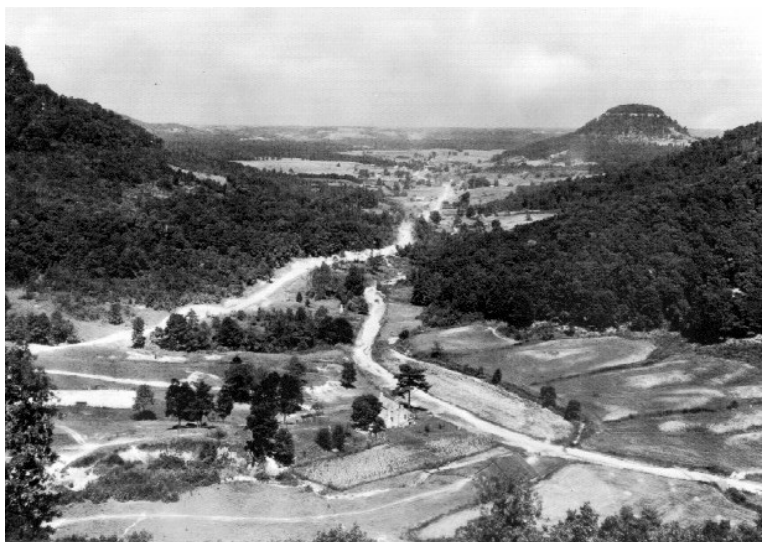
Any incentives for alternative fuels should include sustainability criteria to ensure that the production of these fuels, when assessed over their full lifecycle, results in reduced carbon emissions, reduced fossil fuel consumption

and imports, continued conservation of protected lands, sustainable water use, and does not threaten the affordability of food and animal feed.

Kentucky needs a true Renewable and Efficiency Portfolio Standard, with specific requirements and hard target dates for compliance, rather than the proposed broad goals that lack accountability.

The first section of HB 537 claims to establish a Renewable and Efficiency Portfolio Standard. However, what is described in this bill is *not* an actual portfolio standard as has been enacted by 24 states. A real Renewable and Efficiency Portfolio Standard is a requirement that electricity providers (utilities) obtain a minimum percentage of

(Continued on page 7)



HB 537 would provide tax incentives for the production of petroleum from oil shales, which in Kentucky are found in the knobs that surround the Bluegrass region. Photo credit: KY Historical Society.

House Bills

Bill No	KCC Position	Priority	Sponsor	Summary	Status/Committee
HB 21	Monitor		Riggs, Clark	cf SB 7, HB 81, 135. Allows low-speed electric vehicles to use highways with a posted speed limit of 35 mph or less; requires title, registration, insurance. Committee substitute adds "alternative-speed motorcycle."	Passed H S-Consent
HB 34	Support		Marzian	Adds a representative of the Brain Injury Assn to the KY Recreational Trails Authority.	H-TD & E
HB 53	Oppose as amended		Edmonds et al	Requires titling of ATVs. Committee substitute prohibits registration.	passed H & S to Governor
HB 65	Monitor		Meeks	Permits F & W staff to assist the KY F & W Foundation.	H-NR & E
HB 81	Monitor		Yonts	cf SB 7, HB 21, 135. Allows low-speed electric vehicles to use highways with a posted speed limit of 45 mph or less; requires title, registration, insurance.	H-Trans
HB 84	Monitor		Glenn et al	Authorizes lifetime hunting/ fishing licenses for persons 65 and older.	H-Rules
HB 88	Monitor		Wayne et al	Establishes offense of vehicular assault of a bicyclist or pedestrian.	H-Judiciary
HB 91	Monitor		Denham	Defines "agro-terrorism": "Using any biological, chemical, or radiological agent against, or damaging or destroying, any agricultural facility, agricultural equipment, or agricultural product with the intent to deprive the public of a source of food or water or adversely affect the agriculture industry, the economy, or the public."	H-Judiciary
HB 92	Support		Yonts	Extends registration deadline for petroleum storage tanks to 2015.	H-NR & E
HB 104	Strongly support		Pasley	"Stream-Saver" Bill. Prohibits placing mining spoil in streams.	H-NR & E
HB 119	Oppose		Hall et al	Reduces number of required emergency-trained staff from two to one in mining operations with fewer than 18 employees.	H-Rules
HB 122	Monitor		Nelson, Denham	Requires teaching of "fire ecology" in core science curriculum.	H-Edn
HB 127	Monitor		Rollins et al	Reduces duration of scenic easements on property owned by air boards from 30 to 20 years.	Passed H S-Judiciary
HB 135	Monitor		Higdon	cf SB 7, HB 21, 81. Allows low-speed electric vehicles to use highways with a posted speed limit of 45 mph or less; requires title, registration, insurance.	H-Transpntn
HB 160	Study		Meeks et al	Requires state agencies and universities to estimate recycled waste.	Passed H S-NR & E
HB 162	Support		Pullin et al	Reduces property taxes on land used to produce "energy feedstocks" (eg switchgrass) on voluntarily-remediated brownfields.	Passed H S-NR & E
HB 172	Support		McKee, Osborne	Clarifies land size (min 5 acres), duration of use, and uses of lands that qualify for an agricultural district; requires conservation district to consider comprehensive and drinking water facilities plans before approving; requires periodic reviews.	Passed H S-Ag
HB 178	Strongly support	✓	Adkins, Steele	Re-enacts HB 2, including "High Performance Building" requirements for state offices and conservation incentives. HB 2 passed the 2008 session after midnight of the last day. S floor amendment adds SB 66 (tar sands) to incentivized alternatives.	Passed H S-NR & E
HB 205	Monitor		Riggs et al	Requires impairment as basis for lawsuit for cancer from silica dust.	H-Judiciary

House Bills (cont'd)

Bill No	KCC Position	Priority	Sponsor	Summary	Status/ Committee
HB 211	Support		Combs	Includes "removal of woody biomass" in definition of "timber harvesting operations" related to forest conservation law; restricts exemption for firewood to personal use.	H-Rules
HB 215	Support		Flood	Expands coverage of the Environmental Trust Fund to "environment-ally beneficial projects;" prohibits funds for routine EPPC activities. Committee Substitute better defines eligible projects.	Passed H S-Rules
HB 217	Monitor		Floyd	Amends the KY constitution to permit 5% of registered voters for a statute and 8% for a constitutional amendment to petition for a ballot initiative that must be constitutional and cannot be vetoed.	H-ECAIA
HB 224	Support		Wayne, Clark	Exempts vegetable oil from motor fuels tax for five years.	H-A & R
HB 235	Support		McKee, Denham	Establishes a "Forest Health Board" related to identifying/ prioritizing threats; includes Woodland Owners Assn; requires the Division of Forestry's education program to include fire prevention.	Passed H S-Rules
HB 245	Support		Collins	Designates Heritage Lands nature license plates as the official "green license plate."	recomm H-Transpt
HB 266	Support		Napier	Creates a "Go Green" license plate with proceeds payable to Kentucky PRIDE.	H-Transpt
HB 285	Oppose		Adkins	Establishes tax incentives for a pilot "clean coal" generating plant with certain carbon capture or sequestration <i>capabilities</i> greater than 300 mw if federal incentives become available.	H-Rules
HB 344	Support		McKee et al	Establishes an agricultural commodities program that distributes to food banks.	Passed H & S to Governor
HB 345	Support		Stewart	Exempts geo-thermal heat pumps from sales and use tax.	H-A & R
HB 351	Monitor		Adkins et al	Establishes requirements for demonstration carbon sequestration projects authorized by the General Assembly and developed in collaboration with the UK Center for Applied Energy Research and KGS; projects supervised by KGS, all liabilities and benefits accrue to KY.	H-NR & E posted
HB 376	Oppose		Rudy et al	cf SB 13. Changes "means for permanent disposal" to "plan for storage" for nuclear waste in criteria for PSC approval of nuclear power facilities.	H-TD & E
HB 396	Support		Combs	Authorizes Div of Forestry to investigate forestry-related crimes, defines investigators as peace officers, and gives AG, Commonwealth and County attorneys jurisdiction to prosecute.	H-NR & E
HB 397	Support		Combs	Increases maximum penalties for "bad actor" loggers and strengthens enforcement provisions.	H-NR & E
HB 422	Needs Revision		Belcher et al	Permits inter-jurisdictional commissions for establishing wastewater treatment plants.	H-Loc Govt posted
HB 452	Oppose		Gooch	Specifies how plans for drilling through coal mines will be permitted. Decreases the buffer from coal mines from 500 to 300 feet.	Passed H & S to Governor
HB 481	Support		Combs	Requires seller of timber to demonstrate title to the timber.	H-NR & E
HB 485	Support		McKee	Doubles cost of registration of a pesticide with Dept of Agriculture to \$250.	Passed H & S to Governor
HB 492	Support		Steele	Encourages pollinator habitat on reclaimed mine lands.	H-NR & E
HB 522	Oppose		Nelson	Directs KY F & W to designate horse trails on suitable F & W lands in certain coal-producing counties.	H-TD & E
HB 537	Oppose		Adkins	Establishes a "Renewable and Efficiency Portfolio Standard " for utilities to set goals (but not standards) consistent with the Governor's Energy Plan; provides tax incentives for ethanol from algae and cellulose and petroleum from oil shale and tar sands. Senate committee substitute adds SB 13 related to nuclear waste storage and SB 138 and SJR 67 related to leasing mineral rights on state lands.	Passed S Rec'd H

KCC’s position on HB 537 (cont’d)

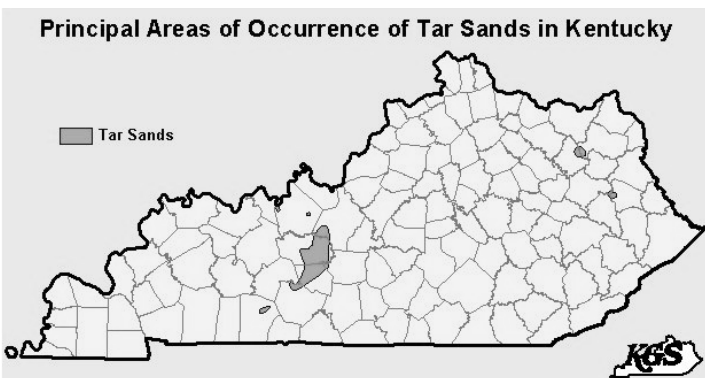
(Continued from page 4)

the power they sell in the state from renewable sources, and meet certain efficiency targets, by a particular date. The bill contains no such requirement. Instead, it sets some broad goals for Kentucky but lacks specifics for how those goals will be reached.

This distinction is extremely important because of the difference in what will happen in the market. Renewable Portfolio Standards are perhaps the most powerful tool states have to promote the development and production of renewable energy. Instability in the markets for renewable energy is a primary reason they don’t develop; a portfolio standard provides the future market guarantee investors need to move forward with projects. If well-designed, a portfolio standard encourages competition and technological innovation for that market share, further driving down the price of renewable energy for consumers and spurring the development of ideas that can lead to further growth.

A strong Renewable and Efficiency Portfolio Standard (REPS) would be the cornerstone of an effective state energy policy, and it’s important that we do it right. Our state energy policy should also provide expanded financial incentives for renewables and efficiency, to make it easier for people to retrofit their homes and businesses. It should meet the needs of low-income Kentuckians, who can benefit greatly from expanded efficiency and conservation programs.

Kentucky needs bold and visionary leadership to confront the dramatic changes that are underway in our energy economy. The REPS goals set forth in HB 537 do not provide this leadership. Rather than establishing specific requirements and target dates for the state’s electric utilities, the bill establishes a workgroup to study the issue, following a study already completed by the Public Service Commission in 2008 and further delaying meaningful action. With Congress and a President primed to pass climate change legislation and impose higher costs on those dependent on coal-fired electricity, Kentucky can no longer wait to take aggressive action to diversify our energy portfolio with renewables and dramatically improve the energy efficiency of our homes and economy.



Tar sands in Kentucky are primarily found in Edmonson and Grayson counties north of Mammoth Cave. The recovery of petroleum from tar sands is an energy-intensive process with environmental consequences for migratory birds and water quality that are difficult to mitigate. Map credit: KY Geological Society.

Conclusion

Kentucky’s heavy dependence on cheap coal-generated electricity makes us very vulnerable to the changes underway in the world around us. Prompt and ambitious action is needed to catalyze the shift to a highly energy efficient economy with a rapidly growing renewable energy sector. The people of Kentucky need this action, to prepare us for the inevitable rate increases and economic changes to come.

We urge the Governor and Legislature to produce an effective, ambitious Renewable and Efficiency Portfolio Standard and ensure the environmental and economic sustainability of our investments in alternative fuels.

State Renewable Portfolio Standards

State	Amount	Year	Notes
Arizona	15%	2025	
California	20%	2010	
Colorado	20%	2020	
Connecticut	23%	2020	
District of Columbia	11%	2022	
Delaware	20%	2019	
Florida	20%	2020	
Hawaii	20%	2010	
Iowa	105 MW		
Illinois	25%	2025	
KENTUCKY (proposed—HB 537)	25%	2025	Voluntary
Massachusetts	20%	2025	(a)
Maryland	9.5%	2022	
Maine	10% (b)	2017 (c)	
Minnesota	25%	2025	
Missouri	11%	2020	Voluntary
Montana	15%	2015	
New Hampshire	16%	2025	
New Jersey	22.5%	2021	
New Mexico	20%	2020	
Nevada	20%	2015	5% solar
New York	24%	2013	
North Carolina	12.5%	2021	
Ohio	12.5%	2025	(d)
Oregon	25%	2025	
Pennsylvania	18%	2020	0.5% solar
Rhode Island	15%	2020	
Texas	5,880 MW	2015	
Utah	20%	2025	
Vermont	10%	2013	Voluntary
Virginia	12%	2022	Voluntary
Washington	15%	2020	
Wisconsin	10%	2015	

TABLE NOTES

- a Rises by 1% per year until revised by the legislature.
 - b New renewable resources; existing RPS is 30% (since 2000)
 - c Increasing 1% every year for 10 years, until reaching 10% by 2017
 - d Additional 12.5% from alternative sources
- Source: “Renewable Portfolio Standard,” Wikipedia, accessed 3-13-09.



Kentucky Conservation Committee
 P O Box 1152
 Frankfort, KY 40602




Join KCC!

The Kentucky Conservation Committee advocates with the members of the General Assembly for the environmental and conservation concerns of its members.

Size matters! Join or contribute today!

KCC Membership Application



Please check all that apply:
 \$25 (individual) \$35 (family) \$15 (limited income) \$50 (contributor) \$100+(patron) \$365 ("365 Club")

Total Enclosed: \$ _____

Name: _____ My state representative (if you know): _____

Address: _____ My state senator (if you know): _____

City _____ State _____ ZIP _____ - _____ Home phone: (____) _____ - _____

Email address: _____

Because one of KCC's main activities is influencing legislation, contributions are **not** tax deductible.
 Please send your check and membership information to: **KCC, P.O. Box 1152, Frankfort, KY 40602.**